



40

LiftX



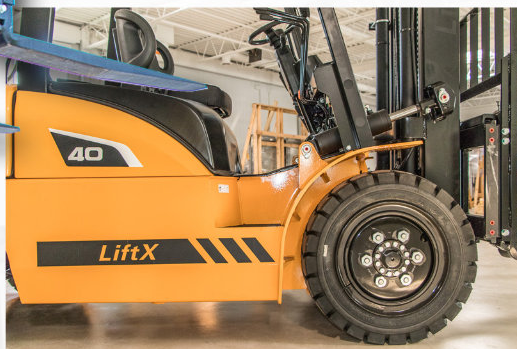
PowerLiftX
Maximizing Productivity

www.powerliftx.com



PowerLiftX

Maximizing Productivity



About PowerLiftX

Our products

Specifications

Contact Us



ECO-FRIENDLY SOLUTIONS

PowerliftX Forklifts Redefining Sustainability
in Material Handling

LPG-powered forklifts, utilizing liquefied petroleum gas, offer a versatile and efficient solution for material handling needs in various industries. These forklifts combine the benefits of propane's clean-burning properties with the power necessary for heavy-duty lifting tasks.

LPG forklifts typically have lower maintenance costs and longer engine life due to cleaner combustion, resulting in reduced downtime and greater operational efficiency over the long term.

With lower emissions compared to traditional gasoline or diesel counterparts, LPG forklifts provide a more environmentally friendly option without compromising performance.

Operator Presence Sensing System (OPS)

The forklift automatically stops when the operator is not present on the seat, ensuring safety at all times.

Advanced Vehicle Control Component

This high-power control unit allows multiple engines and electronic actions to operate simultaneously, continuously regulating and optimizing performance for industry-leading power and fuel efficiency.

Tight Chassis Design

The fully sealed underside reduces the risk of damage from foreign objects like shrinkwrap entering the engine compartment. It also minimizes noise and eliminates safety issues caused by airborne dust particles.

Industrial-Grade Engine

Designed for industrial use, this engine delivers high torque and power at low revolutions, ensuring a long, reliable life with exceptional performance and the lowest possible fuel consumption.

Engine Protection System

To safeguard the engine, the protection system offers two levels of defense during overheating. First, it slows down the machine, and then it shuts it down to prevent damage.

High Vision Mast

Clear visibility through the mast is crucial for safe forklift operation. The PowerLiftX offers excellent visibility, enhancing safety and reducing damage costs.

Fully Floating Dynamic System

The dynamic system separates the chassis from road impacts, ensuring smoother operation. It also protects the transmission and chassis during extended use in challenging environments.



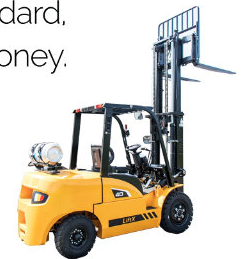
Our Products

LIFT X

LPG Forklifts

The PowerLiftX LPG Forklifts are engineered to maximize operator productivity while minimizing running costs. This forklift sets the highest standards for IC engine counterbalance trucks, combining innovative fuel economy with durable components and a low-maintenance design.

It's an investment that makes perfect business sense, offering a suite of advanced features as standard, delivering true value for money.



SETTING THE STANDARD FOR PERFORMANCE

LPG Forklift 1.5-1.8 ton

LIFT X**15-18**



LPG Forklift 3-4 ton

LIFT X**30-40**



LPG Forklift 2-2.5 ton

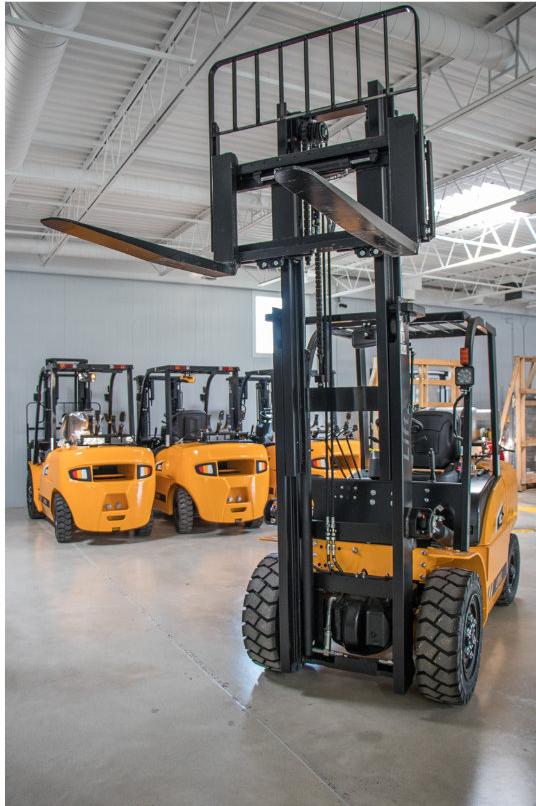
LIFT X**20-25**



LPG Forklift 4.5-5 ton

LIFT X**45-50**





Model

	LX15	LX18
Power Type	LPG	LPG
Rated Capacity at 3000mm lift height	3307 lbs (1500 kg)	3968 lbs (1800 kg)
True Capacity at	3307 lbs (1500 kg)	3968 lbs (1800 kg)
Load Centre	19.7 in (500 mm)	19.7 in (500 mm)

Characteristic & Dimension

Lift Height (2 stage mast)	118.1 in (3000 mm)	118.1 in (3000 mm)
Fork Size (L×W×T)	36.2×4.7×1.4 in (920×120×35 mm)	36.2×4.7×1.4 in (920×120×35 mm)
Mast Tilt Angle (F/R)	6°/12°	6°/12°
Front Overhang (Wheel center to fork face)	16.1 in (410 mm)	16.1 in (410 mm)
Ground Clearance (Bottom of mast)	4.3 in (110 mm)	4.3 in (110 mm)

Overall Dimension

Length to face of fork (Without fork)	89.96 in (2285 mm)	89.96 in (2285 mm)
Overall Width	42.7 in (1086 mm)	42.7 in (1086 mm)
Mast Lowered Height	78.5 in (1995 mm)	78.5 in (1995 mm)
Mast Extended Height (with backrest)	155.1 in (3940 mm)	155.1 in (3940 mm)
Overhead Guard Height	80.3 in (2040 mm)	80.3 in (2040 mm)
Turning Radius (outside)	80.9 in (2055 mm)	80.9 in (2055 mm)
Min. intersecting aisle	84.6 in (2150 mm)	84.6 in (2150 mm)

Performance

Speed

Travel (Empty load)	9.32 mph (15 km/h)	9.32 mph (15 km/h)
Lifting (Full load)	17.72 in/s (450 mm/s)	17.32 in/s (440 mm/s)
Max. Gradeability	20%	20%

Chassis

Tire		
Front x 2 (Air Pneumatic)	6.50-10-12	6.50-10-12
Rear x 2	5.00-8-10	5.00-8-10
Wheelbase	55.1 in (1400 mm)	55.1 in (1400 mm)
Service weight	6217 lbs (2820 kg)	6680 lbs (3030 kg)

Power & Transmission

Battery Voltage/Capacity	12/80 V/Ah	12/80 V/Ah
Engine Model	WG2503-L	WG2503-L
Engine Manufacturer	KUBOTA	KUBOTA
Rated Output/rpm	58.3 hp @ 2600 rpm	58.3 hp @ 2600 rpm
Rated Torque/rpm	129 lb-ft @ 1200 rpm	129 lb-ft @ 1200 rpm
No. of Cylinders	4	4
Bore x Stroke	3.46×4.03 in (88×102.4 mm)	3.46×4.03 in (88×102.4 mm)
Displacement	152 cu in (2491 cc)	152 cu in (2491 cc)
Fuel Tank Capacity	11.9 gal (45 L)	11.9 gal (45 L)
Transmission Type	Hydraulic	Hydraulic
Stage (FWD/RVS)	1/1	1/1
Operating Pressure for attachment	2103 psi (14.5 Mpa)	2103 psi (14.5 Mpa)





Model

	LX20	LX25
Power Type	LPG	LPG
Rated Capacity at 3000mm lift height	4409 lbs (2000 kg)	5512 lbs (2500 kg)
True Capacity at	4409 lbs (2000 kg)	5512 lbs (2500 kg)
Load Centre	19.7 in (500 mm)	19.7 in (500 mm)

Characteristic & Dimension

Lift Height (2 stage mast)	118.1 in (3000 mm)	118.1 in (3000 mm)
Fork Size (L×W×T)	42.1×4.7×1.6 in (1070×120×40 mm)	42.1×4.7×1.6 in (1070×120×40 mm)
Mast Tilt Angle (F/R)	6°/12°	6°/12°
Front Overhang (Wheel center to fork face)	18.3 in (465 mm)	18.3 in (465 mm)
Ground Clearance (Bottom of mast)	4.3 in (110 mm)	4.3 in (110 mm)

Overall Dimension

Length to face of fork (Without fork)	102.2 in (2595 mm)	102.2 in (2595 mm)
Overall Width	45.3 in (1150 mm)	45.3 in (1150 mm)
Mast Lowered Height	81.5 in (2070 mm)	81.5 in (2070 mm)
Mast Extended Height (with backrest)	160.2 in (4070 mm)	160.2 in (4070 mm)
Overhead Guard Height	81.5 in (2070 mm)	81.5 in (2070 mm)
Turning Radius (outside)	90.9 in (2310 mm)	90.9 in (2310 mm)
Min. intersecting aisle	93.7 in (2380 mm)	93.7 in (2380 mm)

Performance

Speed

Travel (Empty load)	11.8 mph (19 km/h)	11.8 mph (19 km/h)
Lifting (Full load)	20.9 in/s (530 mm/s)	20.9 in/s (530 mm/s)
Max. Gradeability	20%	20%

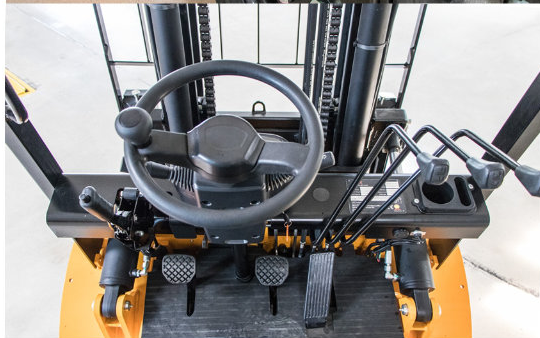
Chassis

Tire		
Front x 2 (Air Pneumatic)	7.00-12-12	7.00-12-12
Rear x 2	6.00-9-10	6.00-9-10
Wheelbase	63 in (1600 mm)	63 in (1600 mm)
Service weight	7915 lbs (3590 kg)	8356 lbs (3790 kg)

Power & Transmission

Battery Voltage/Capacity	12/80 V/Ah	12/80 V/Ah
Engine Model	WG2503-L	WG2503-L
Engine Manufacturer	KUBOTA	KUBOTA
Rated Output/rpm	58.3 hp @ 2600 rpm	58.3 hp @ 2600 rpm (43.5 kW @ 2600 rpm)
Rated Torque/rpm	129 lb-ft @ 1200 rpm	129 lb-ft @ 1200 rpm (175 N·m @ 1200 rpm)
No. of Cylinders	4	4
Bore x Stroke	3.46×4.03 in (88×102.4 mm)	3.46×4.03 in (88×102.4 mm)
Displacement	152 cu in (2491 cc)	152 cu in (2491 cc)
Fuel Tank Capacity	15.9 gal (60 L)	15.9 gal (60 L)
Transmission Type	Hydraulic	Hydraulic
Stage (FWD/RVS)	1/1	1/1
Operating Pressure for attachment	2611 psi (18 Mpa)	2611 psi (18 Mpa)





Model

	LX30	LX35
Power Type	LPG	LPG
Rated Capacity at 3000mm lift height	6614 lbs (3000 kg)	7716 lbs (3500 kg)
True Capacity at	6614 lbs (3000 kg)	7716 lbs (3500 kg)
Load Centre	19.7 in (500 mm)	19.7 in (500 mm)

Characteristic & Dimension

Lift Height (2 stage mast)	118.1 in (3000 mm)	118.1 in (3000 mm)
Fork Size (L×W×T)	42.1x4.9x1.8 in (1070x125x45 mm)	42.1x4.9x2.0 in (1070x125x50 mm)
Mast Tilt Angle (F/R)	6°/12°	6°/12°
Front Overhang (Wheel center to fork face)	18.9 in (480 mm)	19.1 in (485 mm)
Ground Clearance (Bottom of mast)	5.5 in (140 mm)	5.5 in (140 mm)

Overall Dimension

Length to face of fork (Without fork)	107.5 in (2730 mm)	109.3 in (2775 mm)
Overall Width	48.2 in (1225 mm)	48.2 in (1225 mm)
Mast Lowered Height	83.3 in (2115 mm)	83.3 in (2115 mm)
Mast Extended Height (with backrest)	163.4 in (4150 mm)	163.4 in (4150 mm)
Overhead Guard Height	82.3 in (2090 mm)	82.3 in (2090 mm)
Turning Radius (outside)	96.1 in (2440 mm)	97.6 in (2480 mm)
Min. intersecting aisle	98.0 in (2490 mm)	99.6 in (2530 mm)

Performance

Speed

Travel (Empty load)	12.4 mph (20 km/h)	12.4 mph (20 km/h)
Lifting (Full load)	20.1 in/s (510 mm/s)	17.3 in/s (440 mm/s)
Max. Gradeability	20%	20%

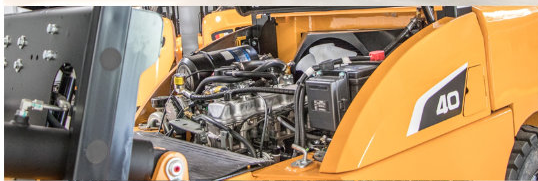
Chassis

Tire		
Front x 2 (Air Pneumatic)	28×9-15-12	28×9-15-12
Rear x 2	6.50-10-10	6.50-10-10
Wheelbase	66.9 in (1700 mm)	66.9 in (1700 mm)
Service weight	9480 lbs (4300 kg)	9921 lbs (4500 kg)

Power & Transmission

Battery Voltage/Capacity	12/80 V/Ah	12/80 V/Ah
Engine Model	WG2503-L	WG2503-L
Engine Manufacturer	KUBOTA	KUBOTA
Rated Output/rpm	58.3 hp @ 2600 rpm	58.3 hp @ 2600 rpm
Rated Torque/rpm	129 lb-ft @ 1200 rpm	129 lb-ft @ 1200 rpm
No. of Cylinders	4	4
Bore x Stroke	3.46x4.03 in (88x102.4 mm)	3.46x4.03 in (88x102.4 mm)
Displacement	152 cu in (2491 cc)	152 cu in (2491 cc)
Fuel Tank Capacity	15.9 gal (60 L)	15.9 gal (60 L)
Transmission Type	Hydraulic	Hydraulic
Stage (FWD/RVS)	1/1	1/1
Operating Pressure for attachment	2611 psi (18 Mpa)	2611 psi (18 Mpa)





Model

Power Type
 Rated Capacity at 3000mm lift height
 True Capacity at
 Load Centre

FY40T

LPG
 8818 lbs (4000 kg)
 8818 lbs (4000 kg)
 19.7 in (500 mm)

Characteristic & Dimension

Lift Height (2 stage mast)
 Fork Size (L×W×T)
 Mast Tilt Angle (F/R)
 Front Overhang (Wheel center to fork face)
 Ground Clearance (Bottom of mast)

118.1 in (3000 mm)
 42.1x4.9x2.0 in (1070x125x50 mm)
 6°/12°
 19.5 in (495 mm)
 5.5 in (140 mm)

Overall Dimension

Length to face of fork (Without fork)
 Overall Width
 Mast Lowered Height
 Mast Extended Height (with backrest)
 Overhead Guard Height
 Turning Radius (outside)
 Min. intersecting aisle

113.8 in (2890 mm)
 55.5 in (1410 mm)
 86.4 in (2195 mm)
 164.6 in (4180 mm)
 83.5 in (2120 mm)
 106.3 in (2700 mm)
 106.3 in (2700 mm)

Performance

Speed

Travel (Empty load)
 Lifting (Full load)
 Max. Gradeability

11.8 mph (19 km/h)
 12.6 in/s (320 mm/s)
 20%

Chassis

Tire
 Front x 2 (Air Pneumatic)
 Rear x 2
 Wheelbase
 Service weight

250-15-16
 6.50-10-10
 74.8 in (1900 mm)
 11244 lbs (5100 kg)

Power & Transmission

Battery Voltage/Capacity
 Engine Model
 Engine Manufacturer
 Rated Output/rpm
 Rated Torque/rpm
 No. of Cylinders
 Bore x Stroke
 Displacement
 Fuel Tank Capacity
 Transmission Type
 Stage (FWD/RVS)
 Operating Pressure for attachment

12/80 V/Ah
 WG2503-L
 KUBOTA
 58.3 hp @ 2600 rpm
 129 lb-ft @ 1200 rpm
 4
 3.46x4.03 in (88x102.4 mm)
 152 cu in (2491 cc)
 18.5 gal (70 L)
 Hydraulic
 1/1
 2611 psi (18 Mpa)





Model

	LX45	LX50
Power Type	LPG	LPG
Rated Capacity at 3000mm lift height	9920 lbs (4500 kg)	11020 lbs (5000 kg)
True Capacity at	9920 lbs (4500 kg)	11020 lbs (5000 kg)
Load Centre	19.7 in (500 mm)	19.7 in (500 mm)

Characteristic & Dimension

Lift Height (2 stage mast)	118.1 in (3000 mm)	118.1 in (3000 mm)
Fork Size (L×W×T)	42.1×5.9×2.0 in (1070×150×50 mm)	48.0×5.9×2.0 in (1220×150×50 mm)
Mast Tilt Angle (F/R)	6°/12°	6°/12°
Front Overhang (Wheel center to fork face)	22.8 in (579 mm)	22.8 in (579 mm)
Ground Clearance (Bottom of mast)	5.9 in (150 mm)	5.9 in (150 mm)

Overall Dimension

Length to face of fork (Without fork)	128.3 in (3260 mm)	128.3 in (3260 mm)
Overall Width	57.5 in (1460 mm)	57.5 in (1460 mm)
Mast Lowered Height	89.4 in (2270 mm)	89.4 in (2270 mm)
Mast Extended Height (with backrest)	164.0 in (4165 mm)	164.0 in (4165 mm)
Overhead Guard Height	92.1 in (2340 mm)	92.1 in (2340 mm)
Turning Radius (outside)	114.6 in (2910 mm)	114.6 in (2910 mm)
Min. intersecting aisle	114.9 in (2920 mm)	114.9 in (2920 mm)

Performance

Speed

Travel (Empty load)	15.5 mph (25 km/h)	15.5 mph (25 km/h)
Lifting (Full load)	15.7 in/s (400 mm/s)	15.0 in/s (380 mm/s)
Max. Gradeability	20%	20%

Chassis

Tire	300-15-18	300-15-18
Front x 2 (Air Pneumatic)	7.00-12-12	7.00-12-12
Rear x 2	82.7 in (2100 mm)	82.7 in (2100 mm)
Wheelbase	14110 lbs (6400 kg)	14771 lbs (6700 kg)
Service weight		

Power & Transmission

Battery Voltage/Capacity	12v/80Ah x 2 V/Ah	12v/80Ah x 2 V/Ah
Engine Model	4.3 L	4.3 L
Engine Manufacturer	PSI	PSI
Rated Output/rpm	100.6 hp @ 2200 rpm	100.6 hp @ 2200 rpm
Rated Torque/rpm	192 lb-ft @ 1700 rpm	192 lb-ft @ 1700 rpm
No. of Cylinders	6	6
Bore x Stroke	4.0x3.5 in (101.6x88.39 mm)	4.0x3.5 in (101.6x88.39 mm)
Displacement	262 cu in (4300 cc)	262 cu in (4300 cc)
Fuel Tank Capacity	34.3 gal (130 L)	34.3 gal (130 L)
Transmission Type	Hydraulic	Hydraulic
Stage (FWD/RVS)	2/1	2/1
Operating Pressure for attachment	2611 psi (18 Mpa)	2611 psi (18 Mpa)



PowerLiftX

Maximizing Productivity



Contact us

270 Main Ave Suite B,
Norwalk, CT 06851

9:00 AM - 5:00 PM, Monday - Friday
Saturday by appointment

Phone: (860) 801-5222

Email: info@powerliftx.com

WWW.POWERLIFTX.COM



SETTING THE STANDARD FOR PERFORMANCE

